

PARK SPARKS

APRIL 2023

LINEMAN APPRECIATION

APRIL 2023



PEC line crew from right to left: Sawyer Moser, Ryan Harms, Josh Fatouros, Toby Wahl, Cole Boss, Dane Bondurant, David Hanisch, Cole Kimball, Brady Zachmann, Josh Wood

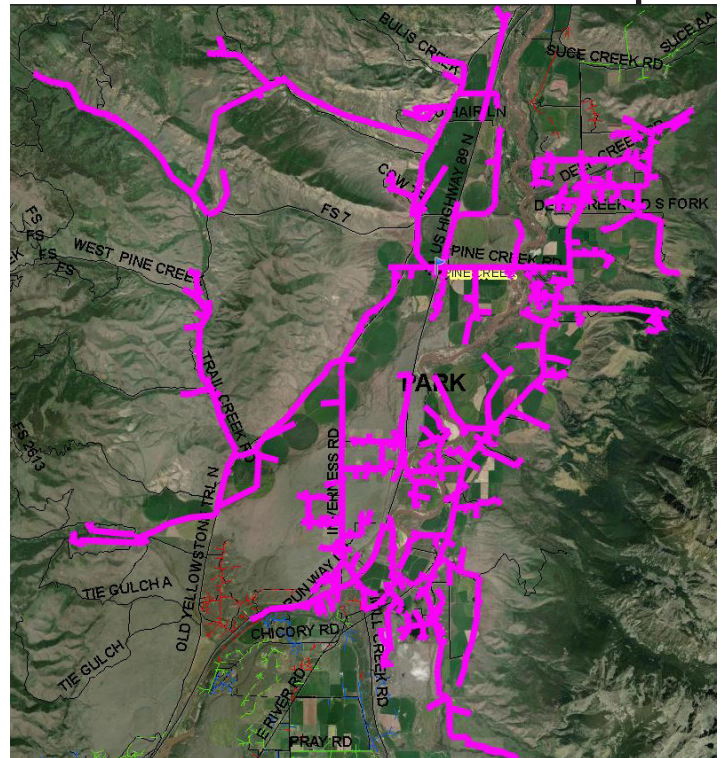
National Lineman Appreciation month is celebrated each year in April and honors the hard work and dedication of America's electrical lineworkers. Park Electric will join the celebration to honor the hard working crews who often work in challenging conditions to keep the lights on. The electricity we take for granted is maintained by these hardworking men and women. We proudly recognize all electrical linemen for the services they perform around the clock in dangerous conditions to keep power flowing and protect the public's safety. When the lights go out, they come to the rescue. We encourage our members to take a moment to thank a lineman for all the work they do.

PLANNED OUTAGE ALERT



Planned Power Outage

Park Electric will be taking a planned outage on the Pine Creek Substation on April 7, 2023. The estimated outage time is 9:00am to 3:00pm. This outage is needed so we can change out the existing substation transformer with a larger transformer to handle additional load due to growth in the area. This outage will be for members in the following areas: East River Road from Indian Hill Road to Mill Creek, Indian Hill Road, Jumping Rainbow area, Upper Rainbow, Deep Creek area, Mount Delano Road, Pool Creek Rd, Pine Creek Cut across, Frelich Lane, Sunset Trail, Luccock Park, Loch Leven, Parts of Elbow Creek area, Majestic Ridge Trail area, Runway Lane, Spur Hill Road, Querencia Lane area, Pray Siding, Caledonia Road area, Eight Mile Creek, Trail Creek Area, Old Yellowstone Trail North, Strickland Creek, Spring Creek Hills, Ohair Lane. If you have any questions, please call the office at 406-222-7778. We appreciate your patience and understanding while we complete this needed work.



Managers Comments

by Matt Haggerty

PARK SPARKS

APRIL 2023

Park Electric has over 1600 miles of power lines serving over 7,100 meters. Today I would like to focus on our overhead lines and the maintenance that we do annually to minimize outages. We have over 900 miles of overhead lines spanning over four counties. On average we have 25 poles per mile, if you multiply 25 poles per mile by 900 miles of line we would have roughly 22,500 poles. We have to maintain all of those poles and overhead lines. Part of that maintenance involves keeping them free from trees and other hazards.

One of our forms of preventive maintenance for outages is our tree trimming program. Park Electric uses a tree trimming cycle to assure the reliable and safe operation of its electric lines near trees. When tree limbs come in contact with power lines, they are a major cause of electrical outages. Some of these outages are caused when limbs fall or break and then land on electric lines. In many cases, they bring the lines down with them. To reduce outages and minimize safety hazards caused by tree contacts, Park Electric prunes trees away from its power lines on a planned pruning cycle. In certain situations, we will even remove a tree that is causing interference with our primary power lines. Removing a tree will only take place if it meets a strict criteria. If you have a tree that is in our primary lines that you want to have removed, call the office for more information. Just remember,

Park Electric decides whether it is more cost-effective to remove or to continue trimming it. We do not remove trees that are out of our right away.

Keeping power lines clear of limbs and brush provides easier access to power lines, which means quicker restoration of power during storms and other times of trouble. Here are a few tips to ensure your safety:

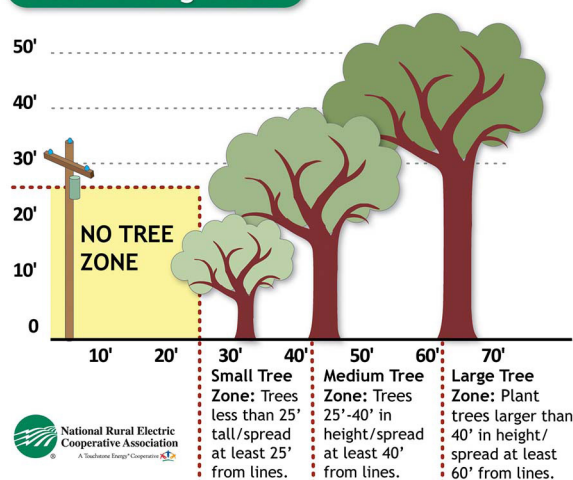
- Never trim limbs or remove trees around power lines. Let a professional tree trimmer handle these situations or contact Park Electric when the trees are near our primary lines.

- Do not climb utility poles or trees near power lines. Tree branches or limbs can conduct electricity when touching a power line.

- In the event of a storm, treat any downed wire as if it is energized, stay away from the line, and call Park Electric. When trees or branches break during storms, do not attempt to pull tree limbs off lines. Let our trained work crews perform this potentially dangerous work.

-If you are planning on planting trees please plant them no less than 25 feet away from our power lines. If you are going to plant trees inside our right away only plant trees that will grow 25 feet tall or less. Please remember if you plant trees that grow taller than 25 feet under our lines, we will all be affected by the outages and costs to maintain them.

Tree Planting Guide



National Rural Electric Cooperative Association
A Touchstone Energy Cooperative

Park Electric Board of Trustees

District 1 - Alan Johnstone 406-220-2186
District 2 - Dan Skattum 406-223-0545
District 3 - Craig Yost 406-222-3008
District 4 - Matt Jesson 406-939-2306
District 5 - Bert Otis 406-333-4802
District 6 - Melanie Roe 406-932-4366
District 7 - Perry Anderson 406-537-4546
General Manager - Matt Haggerty 406-222-3100

Connect with Park Electric

Billing and general information: 406-222-3100
Outage and project information: 406-222-7778

Online: www.parkelectric.coop
Email: info@parkelectric.coop

Office hours: 8-5 Monday - Friday

Location: 5706 US Hwy 89 S
Livingston, Montana

